

**Resilience** is the ability of a system to withstand changes in its environment causing significant stress and still function.

**Resilience for Migration**  
Municipal services being durable, prepared and prudent against current or future effects of migration.



# RESLOG

Resilience in Local Governance • TURKEY

reslogturkiye  
www.reslogproject.org



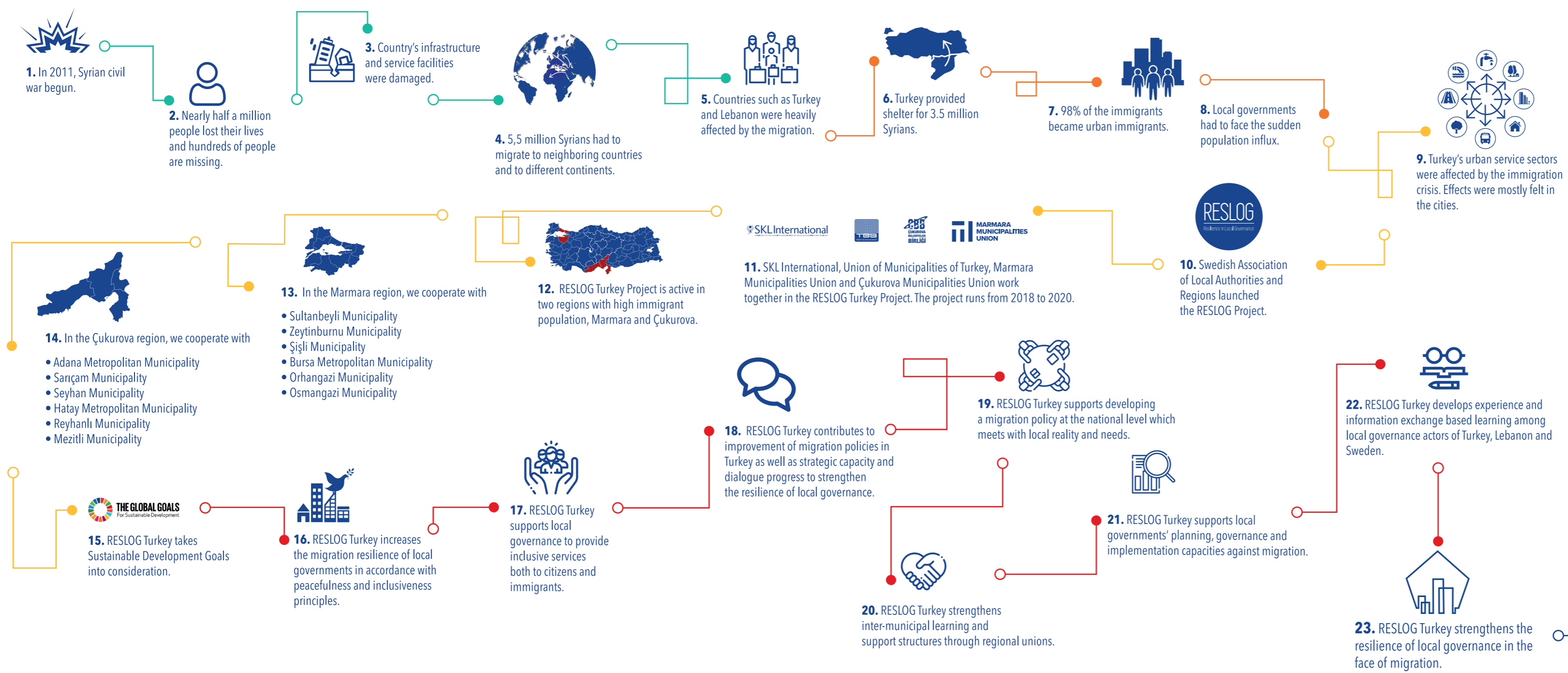
SKL International



## PROJECT SYNOPSIS

<b>Official Name of the Project:</b>	Resilience in Local Governance Turkey • RESLOG														
<b>Short Name of the Project:</b>	RESLOG Turkey														
<b>Project Duration:</b>	2018 – 2020														
<b>Implementing Institution of the Project:</b>	SKL / SKL International														
<b>Partner Countries Covered by the Project:</b>	Turkey, Lebanon														
<b>Project Partners:</b>	Union of Municipalities of Turkey, Marmara Municipalities Union, Çukurova Municipalities Union														
<b>Pilot Municipalities:</b>	<table><tr><td><b>Marmara Municipalities Union</b></td><td><b>Çukurova Municipalities Union</b></td></tr><tr><td>• Sultanbeyli Municipality</td><td>• Adana Metropolitan Municipality</td></tr><tr><td>• Zeytinburnu Municipality</td><td>• Sarıçam Municipality</td></tr><tr><td>• Şişli Municipality</td><td>• Seyhan Municipality</td></tr><tr><td>• Bursa Metropolitan Municipality</td><td>• Hatay Metropolitan Municipality</td></tr><tr><td>• Orhangazi Municipality</td><td>• Reyhanlı Municipality</td></tr><tr><td>• Osmangazi Municipality</td><td>• Mezitli Municipality</td></tr></table>	<b>Marmara Municipalities Union</b>	<b>Çukurova Municipalities Union</b>	• Sultanbeyli Municipality	• Adana Metropolitan Municipality	• Zeytinburnu Municipality	• Sarıçam Municipality	• Şişli Municipality	• Seyhan Municipality	• Bursa Metropolitan Municipality	• Hatay Metropolitan Municipality	• Orhangazi Municipality	• Reyhanlı Municipality	• Osmangazi Municipality	• Mezitli Municipality
<b>Marmara Municipalities Union</b>	<b>Çukurova Municipalities Union</b>														
• Sultanbeyli Municipality	• Adana Metropolitan Municipality														
• Zeytinburnu Municipality	• Sarıçam Municipality														
• Şişli Municipality	• Seyhan Municipality														
• Bursa Metropolitan Municipality	• Hatay Metropolitan Municipality														
• Orhangazi Municipality	• Reyhanlı Municipality														
• Osmangazi Municipality	• Mezitli Municipality														
<b>Web:</b>	www.reslogproject.org														
<b>Social Media Channels:</b>	reslogturkiye 														

## STEP BY STEP RESILIENCE IN LOCAL GOVERNANCE PROJECT



## PROJECT ACTIVITIES

Resilience in Local Governance Project • Turkey is active in four levels: local, regional, national and international.

### LOCAL LEVEL

- Organizing awareness raising activities for municipal staff and high-level officials on the need for developing harmonization strategies;
- Building the capacities of host communities to develop master/action plans for the harmonization between society and refugees;
- Building capacities of citizens assemblies for the harmonization between society and refugees
- To investigate and promote connection of municipalities in international networks
- Organizing peer to peer activities with Swedish municipalities
- To investigate the opportunities for follow-up funding

### REGIONAL LEVEL

- Supporting to improve Regional Municipalities' Union capacity to serve their municipalities
- Supporting to improve networking among Regional Municipalities' Union
- To initiate peer to peer events with Swedish municipalities and SKL
- Organizing awareness raising and planning events, workshops, forums, round table meetings, for member municipalities

### NATIONAL LEVEL

- Forming a mayors' platform on Syrian crisis
- To support structuring of a network among municipal associations, starting with Municipalities Union, Çukurova Municipalities Union and Marmara Municipalities Union

### INTERNATIONAL LEVEL

- Supporting cooperation and information exchange among the local governance actors of Sweden, Turkey and Lebanon